



**CAMBRIDGESHIRE
& PETERBOROUGH**
COMBINED AUTHORITY

PAUL BRISTOW
MAYOR OF
CAMBRIDGESHIRE
& PETERBOROUGH



Our Time is Now

Cambridgeshire and Peterborough is the UK's globally recognised centre of innovation, powering the Government's ambitions for growth across the Cambridge – Oxford Corridor and beyond.

As a region, we stand on the global stage as the most innovative economy this side of the Atlantic. Our competition isn't regional or even national, our closest peer is the world's second global innovation hub, Boston, Massachusetts.

Our area is key to unlocking the Government's ambitions for growth through the creation of an innovation corridor between Cambridgeshire & Peterborough and Oxford. Through our leading innovation economy, our region will drive national growth, supporting emergent sectors in London, the Midlands and the North.

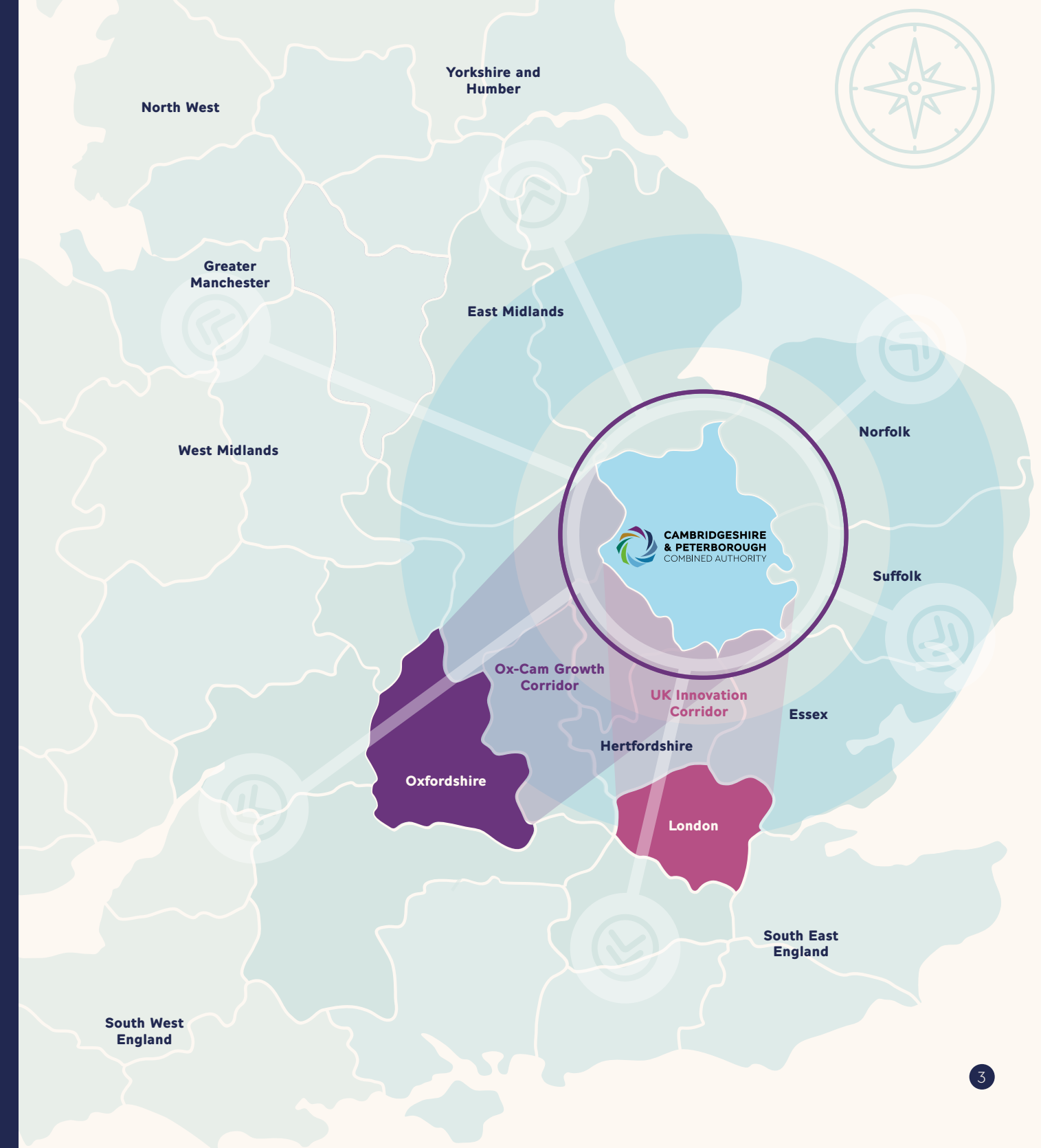
Our growth plan will utilise our historic strengths and embed innovation across our key strategic priorities.

This will ensure a future-proofed industrial strategy capable of driving us to our aim of increasing the area's GVA to £40bn by 2042. Coupled with our foundational infrastructure priorities now being delivered, supporting new housing and skills development, we are proud to say:

Our Time is Now

The UK's globally recognised centre of innovation

We are powering the Government's ambitions for growth, innovation, housing and skills.



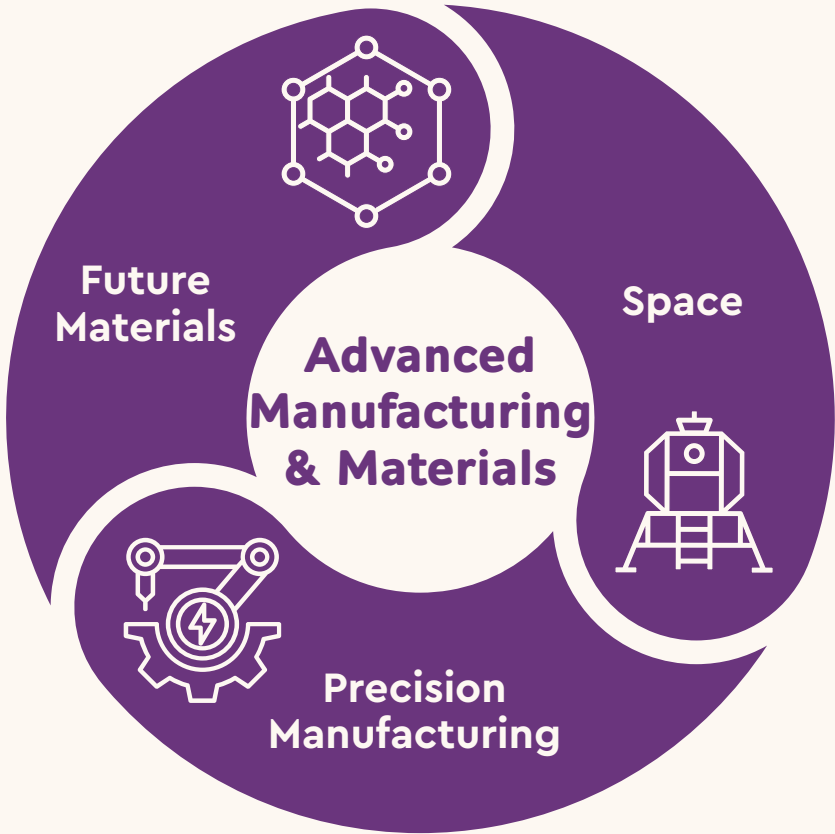
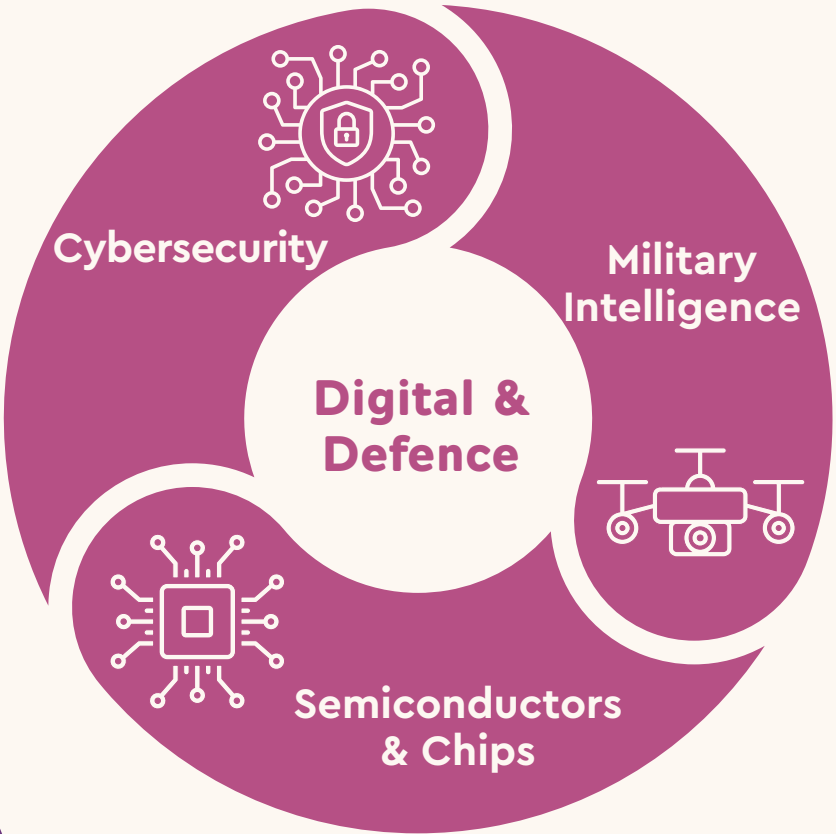
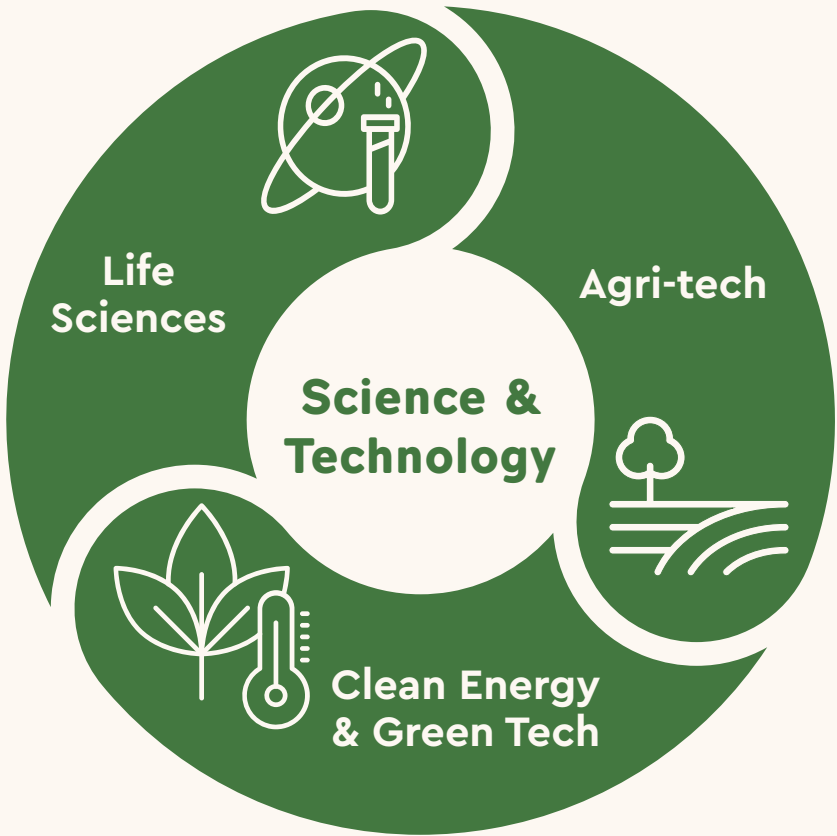
Our growth priorities

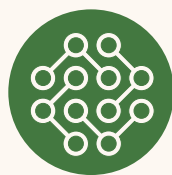
Cambridgeshire and Peterborough is at the heart of the national growth mission. We are determined to deliver growth for our area and for UK PLC.

Our local growth plan will focus on driving long term high yield growth across three innovation priorities and their sub-sectors. To ensure that our growth is sustainable in the long-term, we are addressing our foundations by delivering a once in a generation infrastructure upgrade for our region.

With our new foundational infrastructure, we will embolden the private sector to deliver the housing needed to support a thriving, high skilled workforce, and attract inwards investment into commercial property to continue growth across our innovation priorities and their sub-sectors.

We aim to at least double our GVA by 2042.

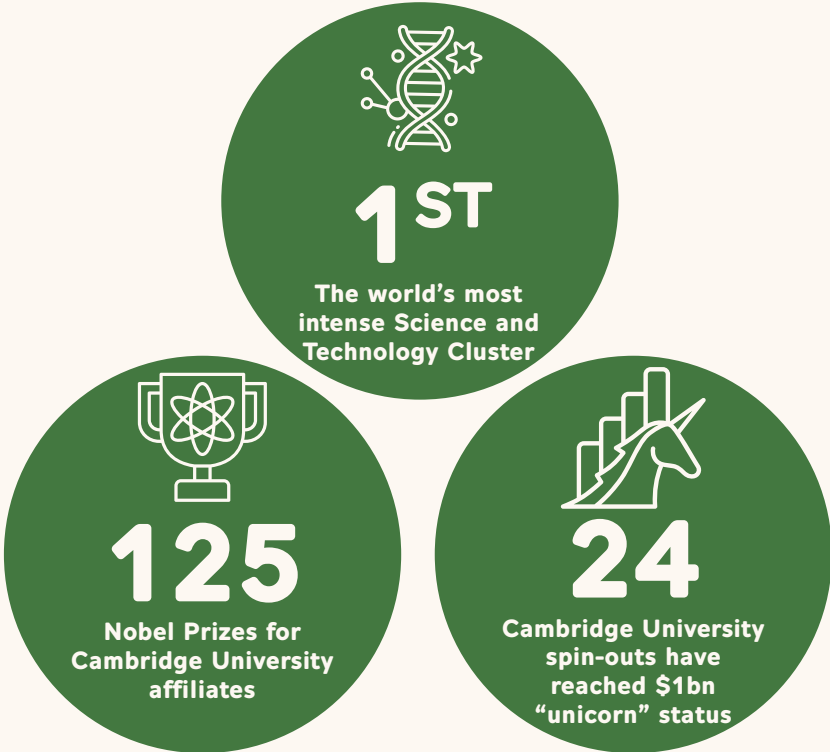




Growth Priority: Science & Technology

Science & Technology is one of the renowned strengths of our region. Initially centered in our historic cities, this sector now spans our area, creating a hotbed of innovation and world leading research & development. Our global reputation, coupled with the Government's prioritisation of the sector, is attracting inward investment and global enterprise to our region. Moreover, this is supporting increased productivity in our region and knowledge-intensive industries across the UK.

Don't take our word for it:



Why is it our Priority?

Science and Technology is a key strength of our economy with extraordinary potential, attracting significant investment, exceptional talent and driving growth.

	Total GVA:	£25.7bn
	GVA per employee:	£142k
	Total employment in the region:	57.9k
	Number of businesses in the region:	1,597
	Total investment funding in 2024:	£7.5b

Why Now?

Science & Technology is not only an area for future investment, but for now. Our innovation eco-system and the sub-sectors of Science & Technology already span our region. We have renewed our focus on turbocharging growth in this sector with our new growth equation. We are also exploring the creation of a special economic zone to drive Cambridgeshire's position in the global market. The time for investment is **now**.



Strategic Developments



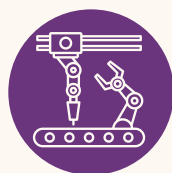
Innovation Hub

Cambridge Innovation Hub will be a multi-sector business asset with a key focus on developing high-growth startups in the innovation sector. A £150 million + investment, Cambridge University estimates this hub will double venture investment in the region.



Cambridge Biomedical Campus

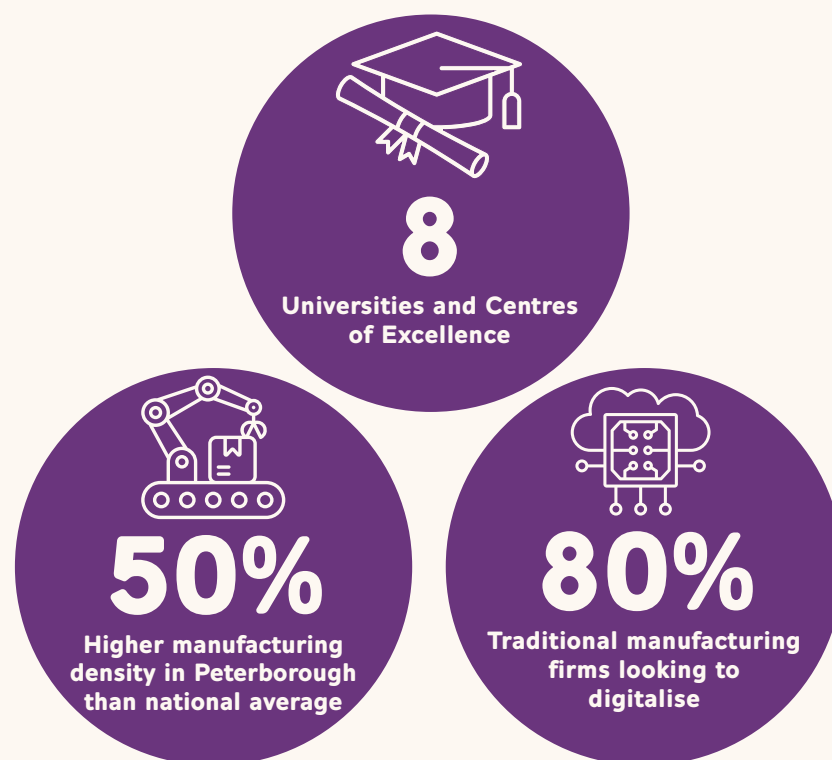
Cambridge Biomedical Campus is a collection of several biomedical research developments, including Cambridge Cancer Research Hospital. The project will drive innovation while promoting health, skills, employment and education in the region.



Growth Priority: Advanced Manufacturing & Materials

Building on our region's industrial history, we are supporting our fast-growing Advanced Manufacturing and Materials sector. This is driven by an eco-system of cutting-edge firms with vital supply chain links to broader sectors, including automotive and engineering. Highly productive and on the leading-edge of innovation, this sector is key to unlocking growth for our region, and the UK.

Don't take our word for it:



Why is it our Priority?

Our Advanced Manufacturing and Materials industry is an economic powerhouse, supporting advancements in key industries and in upskilling our economy.

	Total GVA:	£25.5bn
	GVA per employee:	£181k
	Total employment in the region:	10.8k
	Number of businesses in the region:	749
	Total investment funding in 2024:	£1.8b

Why Now?

Our Advanced Manufacturing and Materials sector is at the forefront of global innovation, powering industries that redefine what's possible. From semiconductors and graphene to space manufacturing, our region offers the specialised expertise, infrastructure, and resources to meet the demands of tomorrow's most ambitious enterprises, already attracting global businesses and inward investment. We are also exploring the creation of a special economic zone around Peterborough to drive development in key sectors across the UK. The time for investment is **now**.

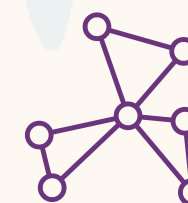


Strategic Developments



Green Innovation Centre

The Global Innovation Centre for Energy Transition will be a research facility focused on the development of new green technologies. The £30m centre is projected to deliver a decade-long research and development programme, creating up to £150 million of value.



Huntingdonshire Cluster

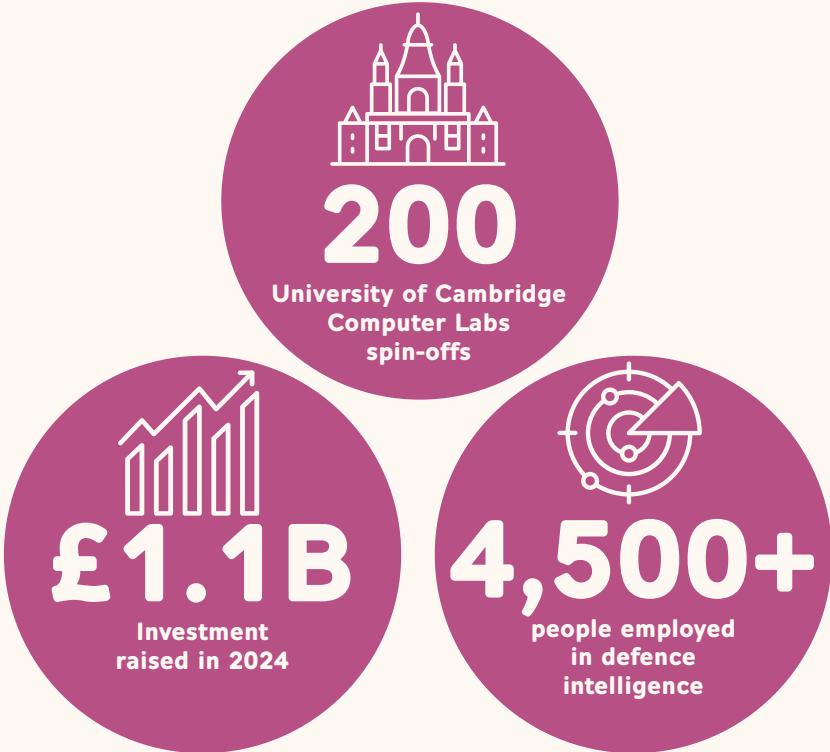
The North Huntingdonshire Cluster, powered by an enterprise zone, will have 15,000 homes, and support 15,000 roles. Connected by the East Coast Mainline and A1, the cluster can reach a population base of 100,000 and could be supercharged with the A141 development and a new Alconbury railway station.



Growth Priority: Digital & Defence

Our region is Britain's leading hub for semiconductor, Artificial Intelligence, and supercomputing research, putting our area at the heart of a burgeoning global digital sector. Through key intersections with our established defence industry, we are harnessing our world-class innovation eco-system to rapidly deliver defence priorities. The twinning of these vital sectors will not only develop the region but will ensure the UK remains at the leading edge of defence, a key government priority.

Don't take our word for it:



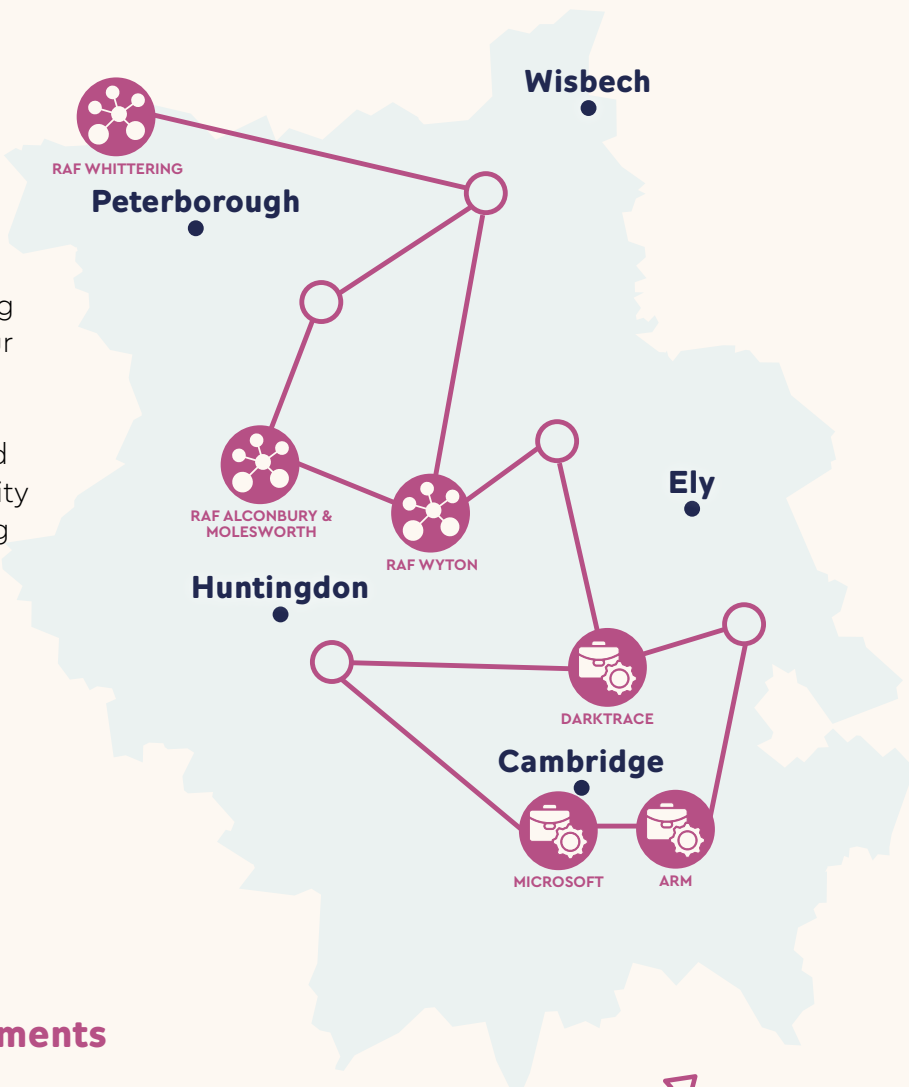
Why is it our Priority?

Our leading innovation capabilities allow our Digital & Defence sectors to push the boundaries of the traditional industries, with our prioritisation supporting the next generation of growth across the region.

	Total GVA:	£25.8bn
	GVA per employee:	£63k
	Total employment in the region:	60k
	Number of businesses in the region:	2,630
	Total investment funding in 2024:	£11.3bn

Why Now?

Our region holds the combination of skills, business networks and resources required to develop a thriving digital industry, critical for driving the economy forward. Our region has a deep legacy of defence infrastructure, now also being harnessed for innovative cybersecurity and specialist engineering purposes. The time for investment is **now**.



Strategic Developments



Duxford AvTech

Duxford AvTech will be a new advanced aviation technology research, manufacturing, and employment campus adjacent to IWM Duxford. It will utilise Duxford Airport for the testing and development of new aviation technology.



Brampton Cross

Brampton Cross will be a net zero enterprise centre in Huntingdonshire. The employment park, currently in the call for sites, would span 1,000 acres, creating business space for companies operating across all growth priority innovation sectors.

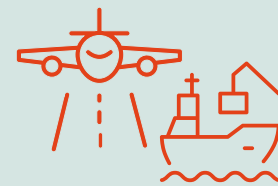


Growth Priority: Transport & Connectivity

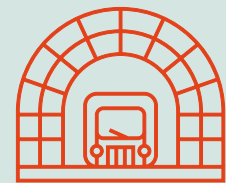
Our region sits in the heart of the UK, allowing close ties with other key economic drivers such as London, Oxford, and the Midlands. With close access to several expanding ports and international airports, our region is an advance logistics hub and a well integrated part of the global economy.

As our innovation ecosystem is connected both physically and digitally allowing our key sectors to expand and thrive. To unlock our new growth equation and support our innovation growth priorities, we are further connecting our people, places and businesses through improved bus, rail, road and mass transit solutions.

Current connectivity:



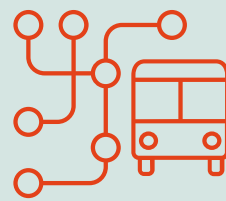
8 international ports and airports within a 2-hour drive



Less than 50 minutes train from Peterborough to London King's Cross



Less than 2 hours between Cambridge and Birmingham



30 new bus routes across the region

What's happening

Inter-connectivity:



Mass Transit

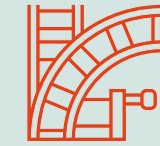
To support our thriving city economies, we will be exploring rapid mass transit systems, to build upon our reliable, effective and newly improved bus network, creating an integrated transport network.



Cambridge South

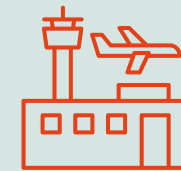
Serving the new Cambridge Biomedical Campus the new station, opening early 2026, will ensure the new development is effectively integrated into the city economy.

Intra-connectivity:



East West Rail

Connecting up the Cambridge – Oxford Growth Corridor, East West Rail will support the economic integration of two of the UK's key growth economies.



Airport Expansion

The Government has consented a total of 22 million extra flight capacity per year at two of our closest airports (Stansted and Luton), connecting our region to the global economy.

By investing in our transport infrastructure, we're unlocking new housing and developments across our region



Peterborough Station Quarter

The Peterborough Station Quarter will be a new significant development in the heart of Peterborough, unlocking new housing and investment. The project will create a new double-sided train station, improving connectivity between the station and city centre and enhance public spaces in the city.



Alconbury Weald Station

Alconbury Weald is a proposed station on the East Coast Mainline in Huntingdonshire. The station will support the Alconbury Weald development, being led by the master developers Urban and Civic, and is due to see 6,500 new homes built on a former airfield.



Growth Priority: Water & Energy

To meet the potential of our rapidly growing economy, it is no secret that our region will require significant upgrades to its Water and Energy infrastructure. Inward investment and industrial growth relies on accessible energy and water – that's why we're embracing key infrastructure developments in our region.

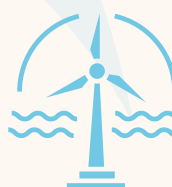
This need has been recognised by all tiers of Government and projects are not only in development, but delivery for this foundational infrastructure priority. In our region, we will ensure the infrastructure developed will not only meet our needs, but deliver a legacy of skills, innovation and a major increase in supply chain spend in the local economy during construction.

What's happening: Energy

The East of England is critical to the UK's energy system, with it's baseload being paramount for powering the country. The area is at the heart National Grid's £35bn investment into UK transmission, combined with significant inwards investment into clean energy generation, our region has a clear strategy for guaranteeing efficient energy supply for the future.

nationalgrid

“National Grid sits at the heart of Britain's energy system, connecting millions of people and businesses safely, reliably and efficiently to the energy they use every day. Over the next five years, National Grid is investing over £30 billion across our businesses to upgrade our networks in the UK, including across East Anglia, in order to support the energy transition, connect new homegrown energy and unlock economic growth in areas such as Cambridgeshire & Peterborough and beyond.”



What's happening: Water

Our water infrastructure is in the process of a once in a generation upgrade that will not only secure short term growth, but will provide the area with the resource to plan and deliver the next generations of development. This is a shared priority for all levels of Government and our water providers, and we have projects both in planning and delivery to secure the change we need.



“Driving forward economic growth and enabling social prosperity sits right at the heart of Anglian Water's business. In 2019, we became the first water company to formally embed delivering for our customers, communities and the environment in the legal underpinning of how we operate. As such, helping our region to grow and thrive is central to our purpose as a business.”

Current Projects

In the next 5 years, we're investing more than half a billion pounds to support the region's infrastructure, including building a new pipeline to carry water from Grafham to Rede and a proposed modern, low carbon wastewater treatment plant.

Grafham Pipeline



Cambridge Waste Water Plant Relocation Project



Future Resilience

To resource the next generation of development, Anglian Water is proposing new reservoirs in the Fens and in Lincolnshire to help meet the growing demands on water supply in the East of England.

Fens Reservoir



Lincs Reservoir





**CAMBRIDGESHIRE
& PETERBOROUGH**
COMBINED AUTHORITY

PAUL BRISTOW
MAYOR OF
CAMBRIDGESHIRE
& PETERBOROUGH

Will you play your part?

In 2025, Cambridgeshire and Peterborough is at the heart of the UK Government agenda for growth. As a region, we stand on the global stage and have the ability to draw international capital to deliver new growth.

As we deliver our two foundational infrastructure priorities and unlock a new eco-system of housing supply, an increasingly skilled workforce and commercial real estate, we are ready to deliver our aim of growth via our three innovation growth priorities.

If you or your organisation have a role to play in delivering our growth, we want to hear from you – please get in touch and find out more via the links below.

Our Time is Now



Find out more about
our projects



Get in touch
with the CPCA