

Welcome, and thank you for joining this virtual public information exhibition, held by Cambridgeshire and Peterborough Combined Authority.

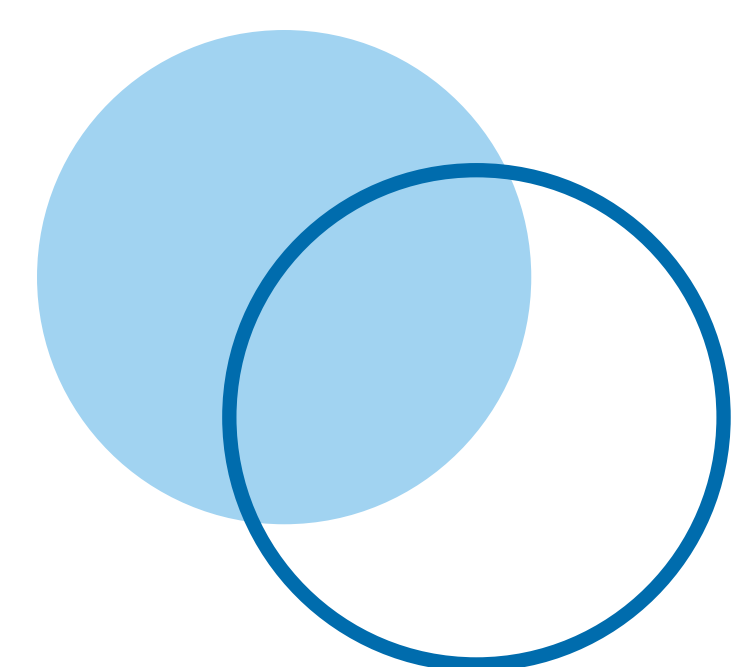
We have chosen this format as the safest way to present the information relating to our A10 Dualling and Junctions project at this time, whilst restrictions on face to face meetings during the coronavirus pandemic are in place.

You will be able to see the work that has been carried out following the completion of the Ely to Cambridge Transport Study, carried out in 2018 by Cambridgeshire County Council, Greater Cambridge Partnership and the Combined Authority.



Mayor James Palmer, 2019

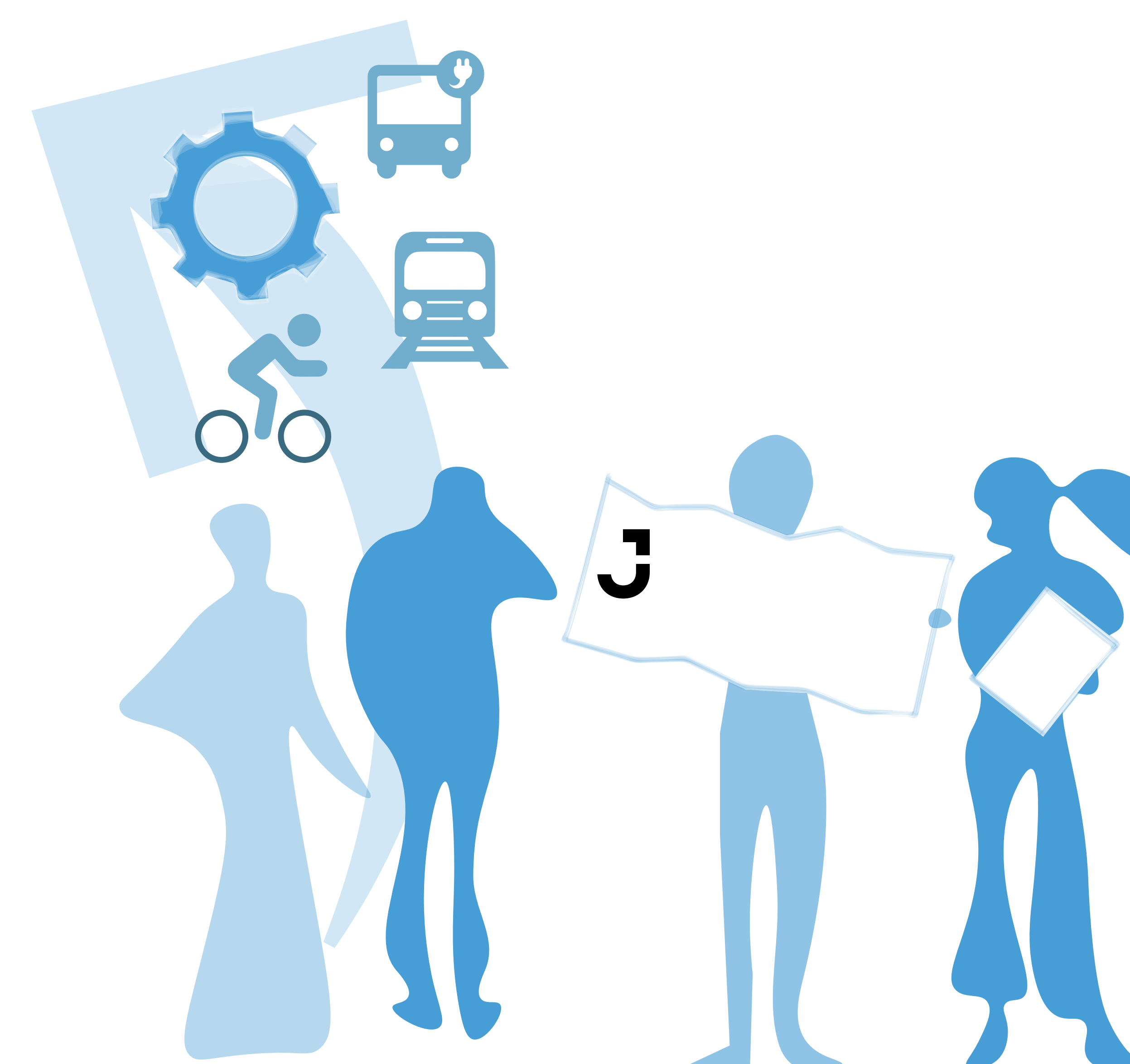
“ We know that for the A10, dualling has been long on the local wish list, with journey times and congestion already causing frustrating delays and holding back our economy. With future predicted housing and business growth in the Cambridge to Ely corridor, the need for this upgrade couldn't be clearer. ”

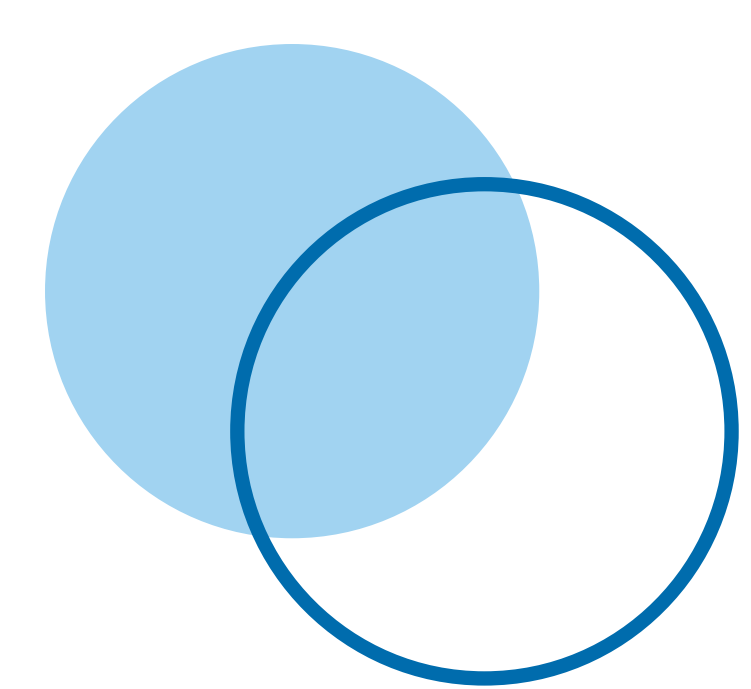


Since December 2019 we have been carrying out work to prepare a strategic outline business case, to submit with a request for further funding to the Department for Transport to take the project to the next stage of development.

This work includes the identification of potential route options for the scheme, and assessing their viability in more detail. You will learn more about this process and see some of the options that are being considered, and we'll let you know more about the next steps.

It's important to stress that at this early stage, these routes are purely indicative; they are not committed and will be assessed and refined further through the appraisal and design process, with further consultation.



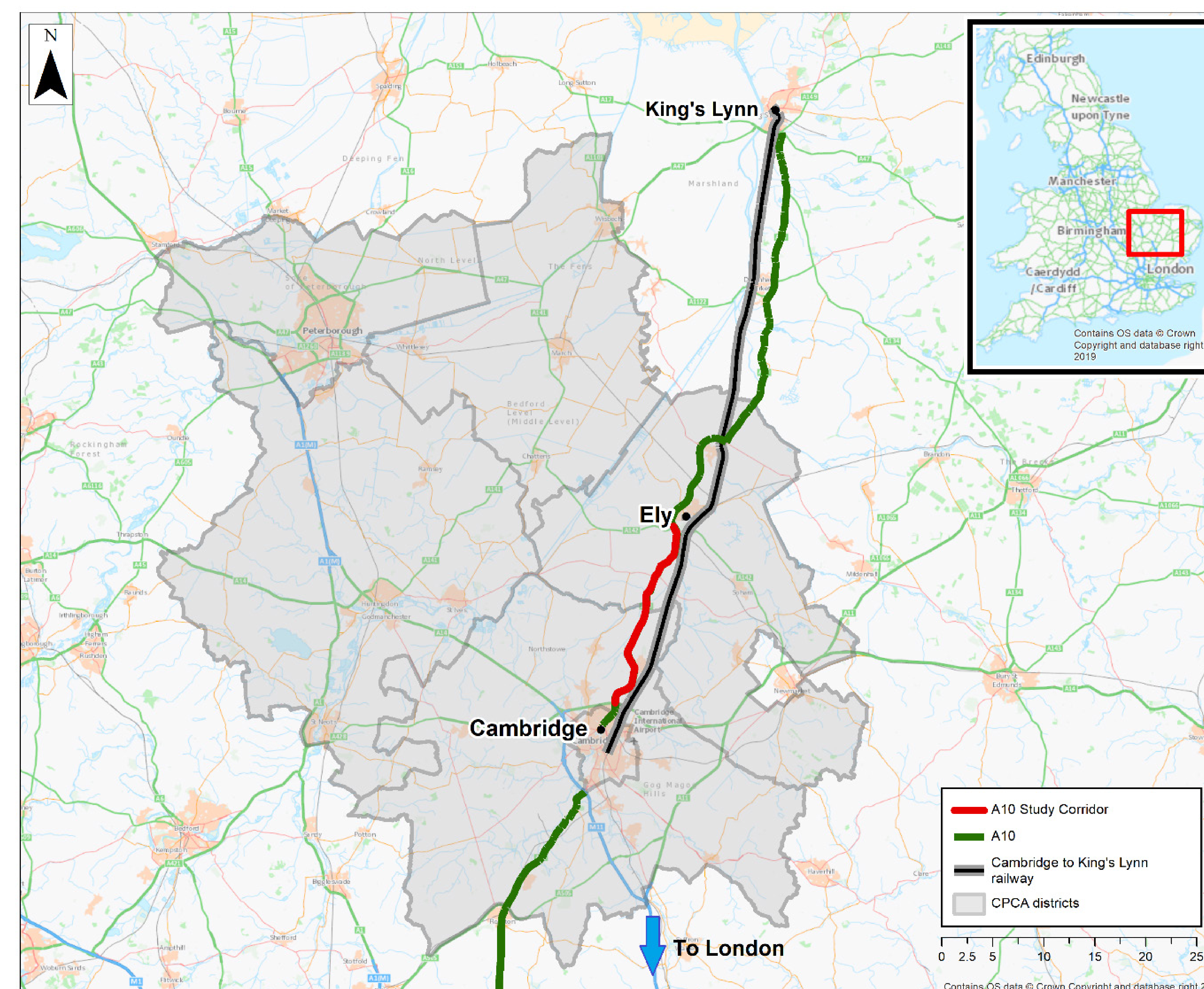


The A10 is an important key route

The A10 between Ely and Cambridge forms part of the direct route between London, Cambridge and Kings Lynn. It connects to other primary routes and to the Strategic Road Network and primary routes and provides connectivity between local communities and centres of employment.

The route is used by local traffic, agricultural vehicles and long-distance traffic including freight.

Tourism, agriculture and technology are key sectors of the economies of Greater Cambridgeshire and the Fens and rely on the connectivity provided by the A10.



A10 Study Corridor

Why we need the scheme

The Ely to Cambridge Transport Study (2018) first assessed measures aimed at encouraging a shift from car use to public transport, walking and cycling.

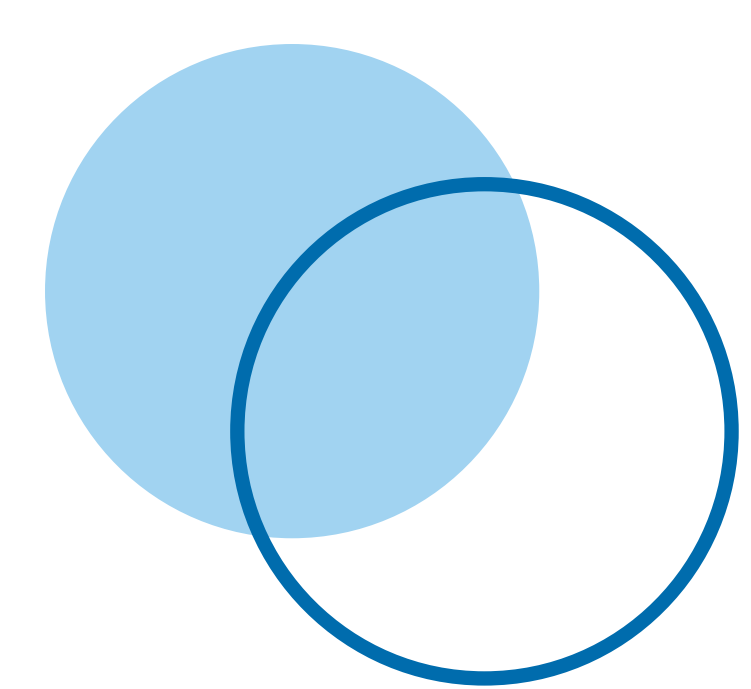
The Study concluded that potential schemes such as the Cambridgeshire Autonomous Metro, Greenways and Waterbeach station improvements will only go so far before long standing issues with the A10 corridor restrict the delivery of housing and productivity gains for the Cambridge economy.

The Study therefore concluded both mode shift measures and highways improvements are needed to solve the problems.



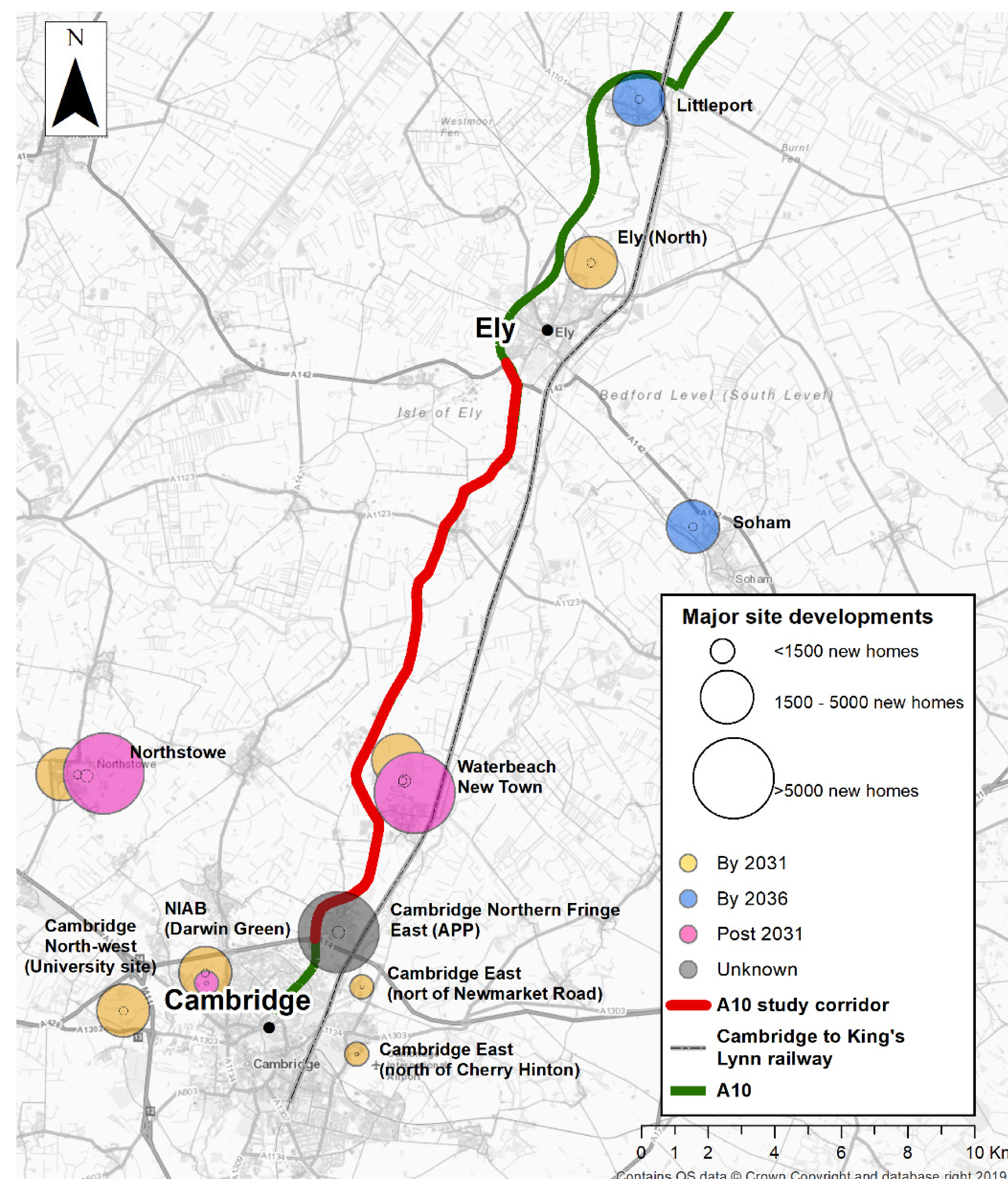
Current Problems

- Peak time congestion with consequent impacts on emissions and the productivity of workers and businesses
- Unreliable Journey times for cars, goods vehicles and local buses
- Road safety problems
- Rat-running on parallel routes such as the B1047, B1049 and B1050
- Community severance in villages alongside the A10 and these parallel routes
- Lack of parallel segregated route for cyclists.



What we hope to achieve

1. Enabling delivery of housing allocations along the A10 corridor as identified in CPCA's Local Plan and non-statutory spatial framework.
2. Reduced congestion on the A10 in the town centre and improved journey time reliability for north-south traffic movements.
3. Enhanced connectivity represented by reduction in journey time relative to no improvements being made.
4. Improved/sustained air quality and reduced traffic noise on the A10 and near residential areas.
5. Enhance biodiversity by increasing the amount of land managed for nature.
6. Increase accessibility to public transport and active travel modes.



Major Site Developments

Scheme Objectives

Housing



Provide the infrastructure that is necessary to enable the building of new homes.

Environment



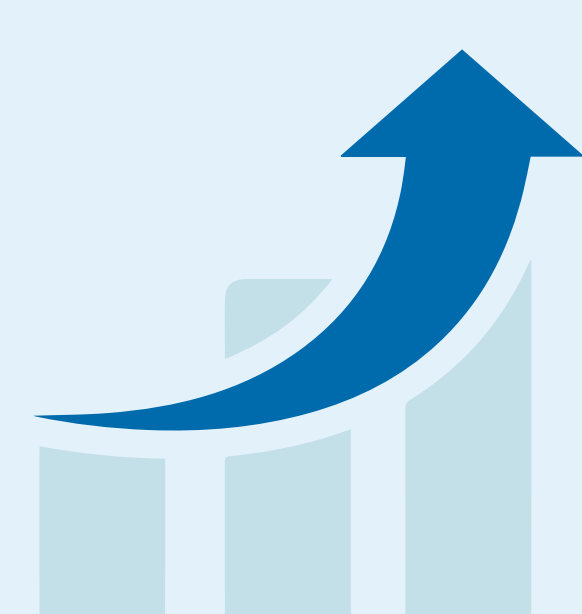
Contribute to achieving the target of Net Zero emissions across Cambridgeshire; enhance biodiversity.

Sustainable & Active Travel



Encourage active travel by improving the comfort, reliability, capacity and/or speed of alternative transport along the A10.

Productivity



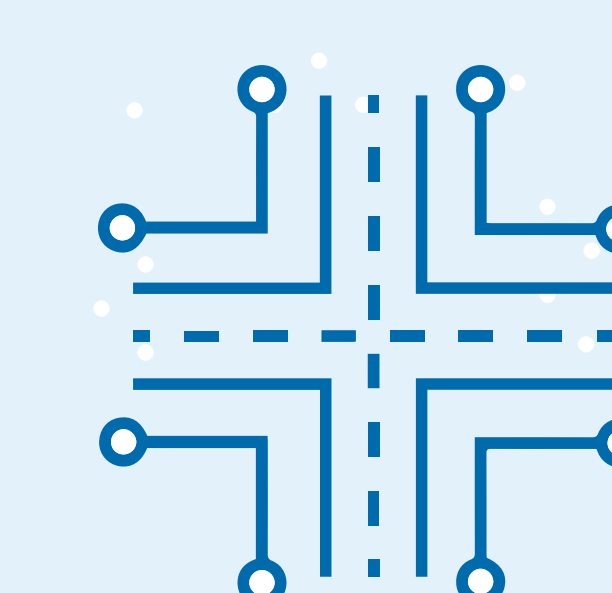
Boost the local economy by improving businesses' connectivity to labour, suppliers and markets.

Quality of Life

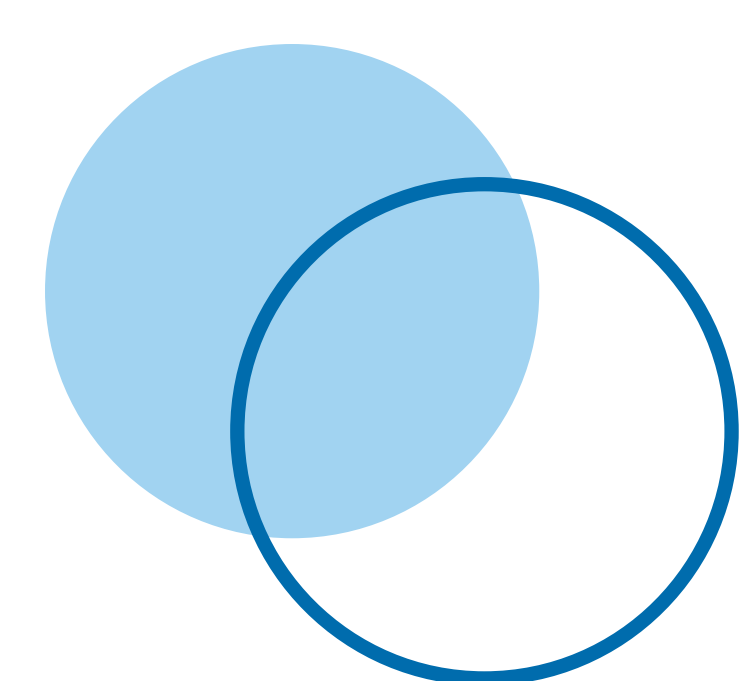


Improve quality of life in local communities by reducing the impacts of traffic on the built environment.

Network Performance



Reducing congestion and collision risk and improving journey time reliability through the corridor.



We have followed the Department for Transport's Option Development Process to identify and assess options to improve the A10 corridor between the north of Cambridge and Ely.



Please click on each number to get some information for every step.

